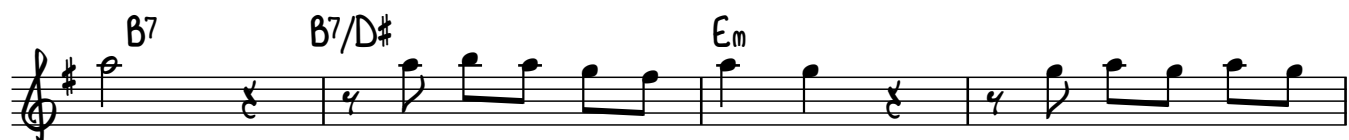
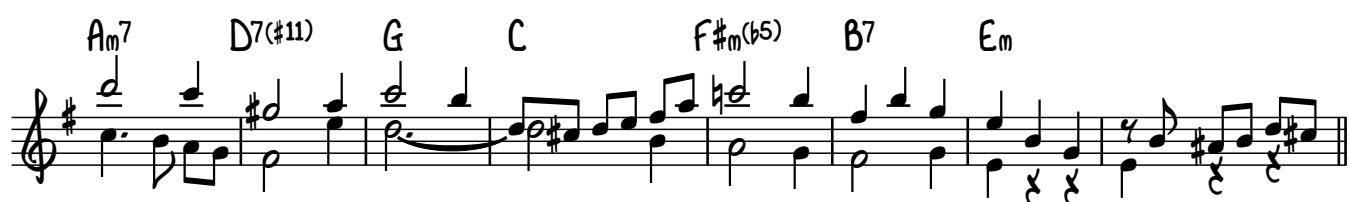
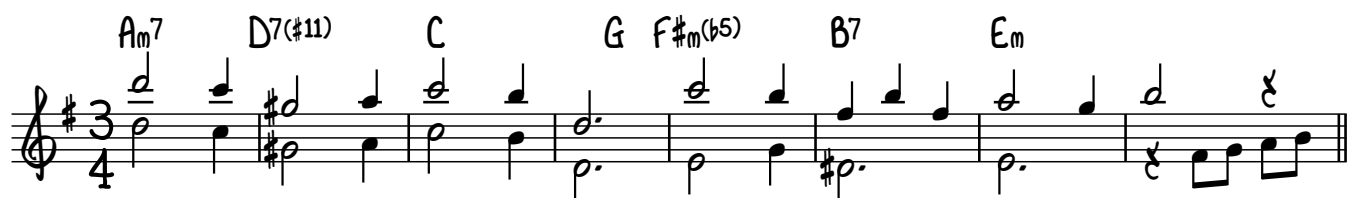


HONDARRIBIA

FAST WALTZ

LOLLO MEIER

$\text{♩} = 74$



[illegible]

ENDING

SOLOS'S ON AA BB, AFTER SOLO'S PLAY B TO ENDING

The musical notation for the ending is written on a single staff with a treble clef. The key signature has one sharp (F#), and the time signature is common time (C). The melody begins with a quarter note on G4, followed by a quarter note on A4, and then a quarter note on B4. This is followed by a quarter note on A4, a quarter note on G4, and a quarter note on F#4. The melody then continues with a quarter note on E4, a quarter note on D4, and a quarter note on C4. The piece concludes with a double bar line.

A musical score for the song 'The Rose Tree'. It is written for a single voice and piano accompaniment. The key signature is one sharp (F#), and the time signature is 4/4. The melody is written on a treble clef staff, and the piano accompaniment is on a bass clef staff. The melody consists of a series of eighth and quarter notes, with a final measure marked 'FINE'. The piano accompaniment provides a simple harmonic support with chords and single notes.