

NOT NIGERIA

STRAIGHT GROOVE ♩ = 130

SORRE REYNDERS (2015)

(A) G7(SUS4)



(B) Bbm11

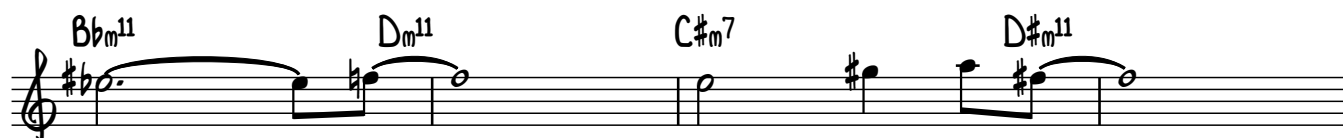


SYNTH MELODY

Dm11

C#m7

D#m11



Bbm11

Dm11

C#m7

D#m11



Bbm11

Dm11

C#m11

D#m11

(SYNTH MELODY CONTINUOUS)



Bbm11

Dm11

C#m11

D#m11

B \flat

(C) G7(SUS4)



SOLO'S

G7(SUS4)



G7(SUS4)

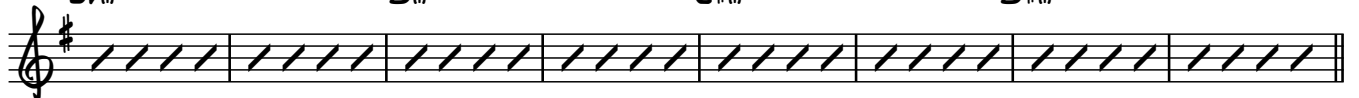


B \flat m¹¹

Dm¹¹

C \sharp m¹¹

D \sharp m¹¹



G7(SUS4)



AFTER SOLO'S D.C. AL FINE