

# Blessed

Moritz Schippers

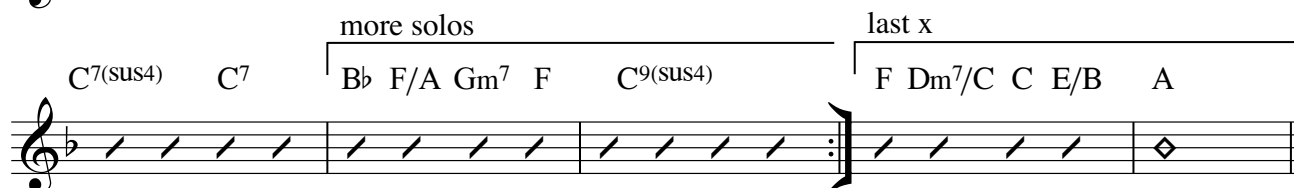
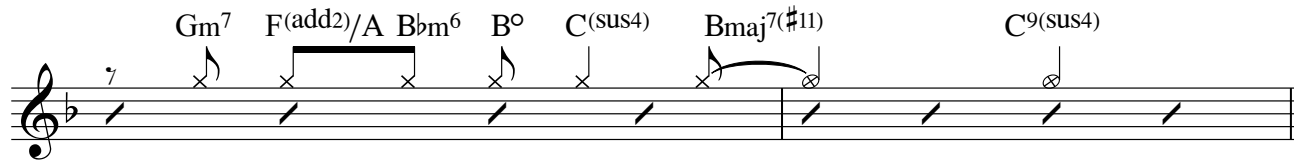
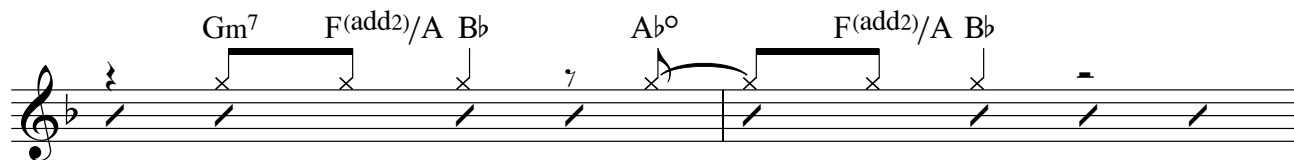
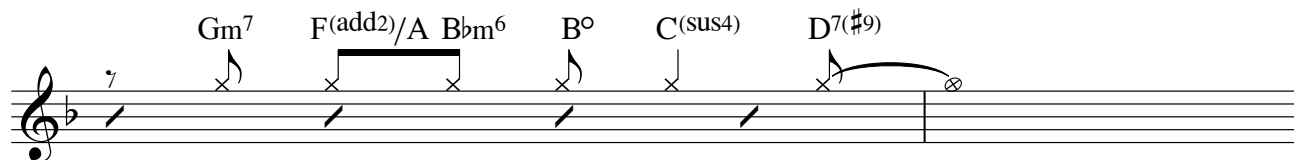
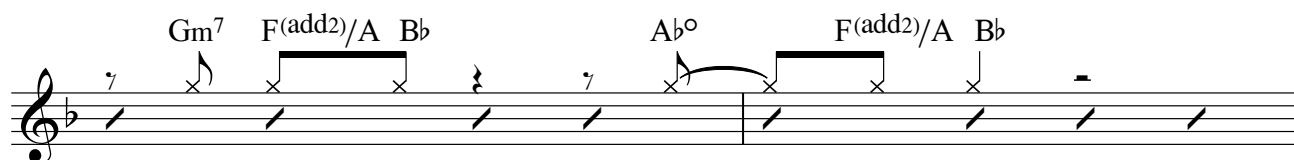
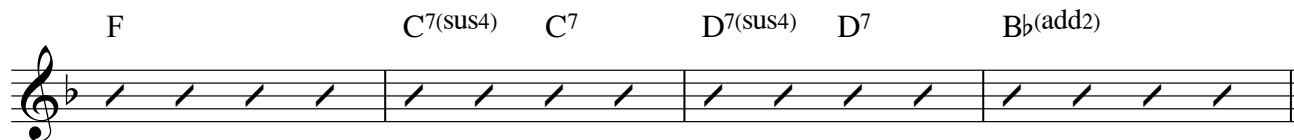
*Backbeat  
with a Gospel Feel* (♩ = 64)

Chord symbols and musical notation details:

- Staff 1: A, C#7(sus4), C#7, A, D(sus4), D
- Staff 2: A, E7(sus4), E7, F#7(sus4), F#7, /B /C#, D(add2)
- Staff 3: A, C#7(sus4), C#7, A, A7/C#, D(add2), F°
- Staff 4: A/E, B(add4)/D#, D(add2), Dm7/C, C, E/B, A
- Staff 5: Bm7, A(add2)/C#, D, C°, A(add2)/C#, D
- Staff 6: Bm7, A(add2)/C#, Dm6, D#°, E(sus4), F#7(#9)
- Staff 7: Bm7, A(add2)/C#, D, C°, A(add2)/C#, D
- Staff 8: Bm7, A(add2)/C#, Dm6, D#°, E(sus4), Ebmaj7(#11), E9(sus4)
- Staff 9: A, C#7(sus4), C#7, A, D(sus4), D
- Staff 10: A, E7(sus4), E7, D, A/C#, Bm7, A, C9(sus4)

**Fine**

# Solos



D. C. al Fine