

Blessed

Moritz Schippers

Backbeat
with a Gospel Feel (♩ = 64)

Chord symbols above the staves:

Staff 1: E, G#7(sus4) G#7, E, A(sus4) A

Staff 2: E, B7(sus4) B7, C#7(sus4) C#7, /F#/G# A(add2)

Staff 3: E, G#7(sus4) G#7, E, E7/G# A(add2) C°

Staff 4: E/B F#(add4)/A# A(add2), Am7/G G B/F# E

Staff 5: F#m7 E(add2)/G# A, G°, E(add2)/G# A

Staff 6: F#m7 E(add2)/G# Am6 A#° B(sus4) C#7(#9)

Staff 7: F#m7 E(add2)/G# A, G°, E(add2)/G# A

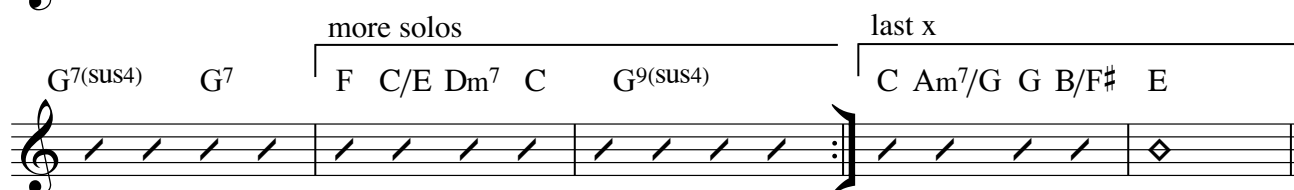
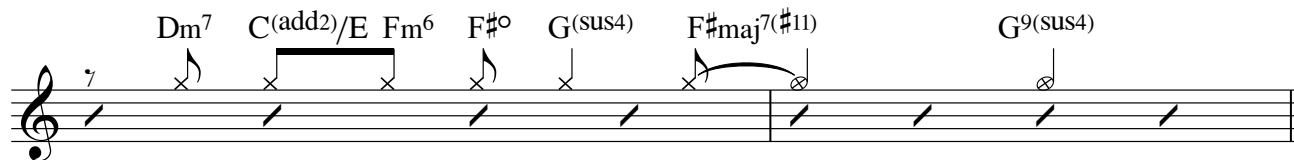
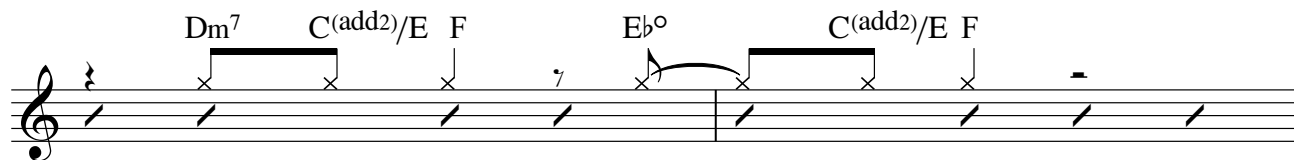
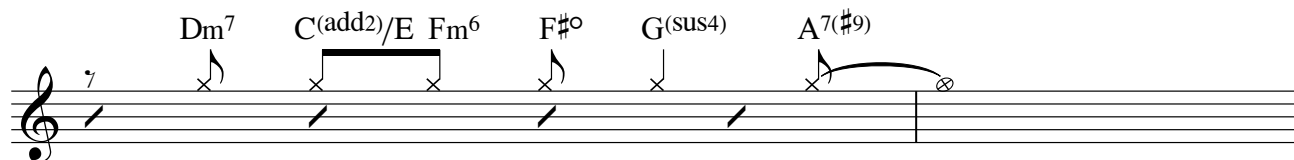
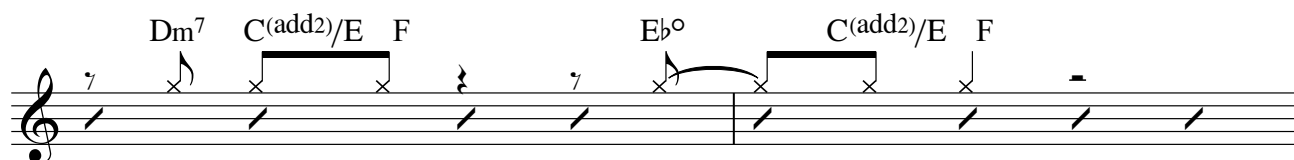
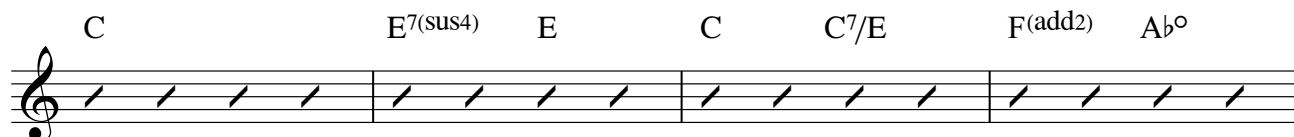
Staff 8: F#m7 E(add2)/G# Am6 A#° B(sus4) Bbmaj7(#11) B9(sus4)

Staff 9: E, G#7(sus4) G#7, E, A(sus4) A

Staff 10: E, B7(sus4) B7, A E/G# F#m7 E, G9(sus4)

Fine

Solos



D. C. al Fine