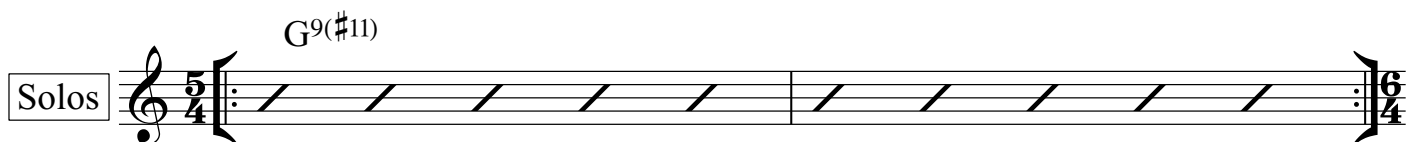
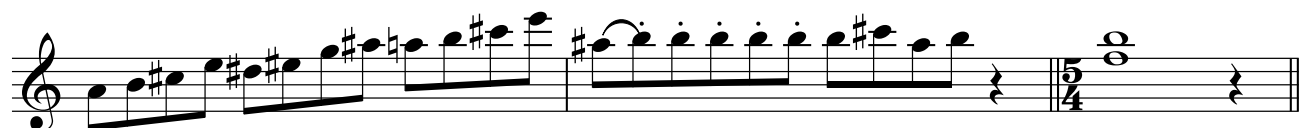


E♭

# Arabesque

*Straight 8ths* (♩ = 200)

Manfred Leuchter



ad lib.



D. C. al Coda

# Arabesque

⦿ CODA

The musical score for 'Arabesque' consists of six staves of music in treble clef. The key signature is one sharp (F#). The time signature is 6/4, which changes to 2/4 in the fifth staff and back to 6/4 in the sixth staff. The music features a variety of note values, including eighth and sixteenth notes, and rests. There are several triplet markings (3) and a final staff ending with a fermata and a descending scale.

*recorded on* Manfred Leuchter - Arabesque (2001)