

Bb

# Miss Saadi

Hans-Josef (Mikesch van) Grümmer

*Medium Swing*

C(sus4) G7(#9) F13 Eb13




§ C(sus4) G7(#9) F13 Eb13




*Bass cont.*

C(sus4) G7(#9) F13 Eb13



*Bass cont.*

C(sus4) G7(#9) F13 Eb13



*Bass cont.*

C(sus4) G7(#9) F13 Eb13



*Bass cont.*



**Fine**

Solos C(sus4) G7(#9) F7(#9) Eb7(#9) G7(#9)

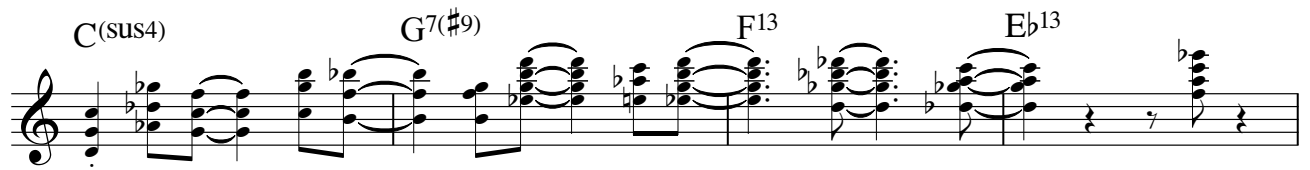


rep. ad lib.

after Solos D. S. al Coda

Miss Saadi

♩ CODA



D. S. al Fine